



WiFi and Standard Models

Curve
Timerstat
Instruction
Manual

Introduction

The 'Curve' is a smart timerstat used to control electric heating devices or valve actuators. It will keep your home at a comfortable temperature whilst minimising energy use. The 'Curve-W' is a WiFi version that connects to your home router. You can download the App on your smartphone to control your electric heating system wherever you are.

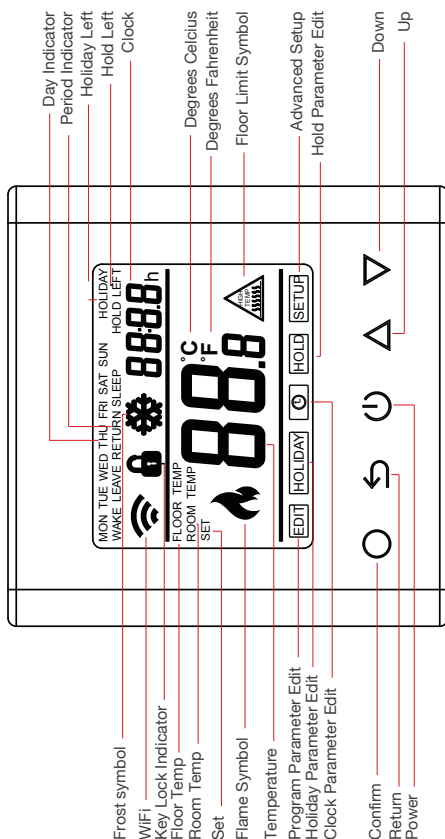
Main Functions

- Time Display
- Holiday Function
- Off time frost protection
- Energy consumption calculation
- Floor high temperature protection
- Open window detection function
- Key-lock
- Sensor Selection
- Hold Function
- Reverse Output Function

Technical Specification

- Supply voltage: 85-265Vac 50/60Hz
- Standby Power: <2W
- IP rating: IP21
- Maximum switching current: 15A
- Wire diameter: ≤2.5mm2

Display



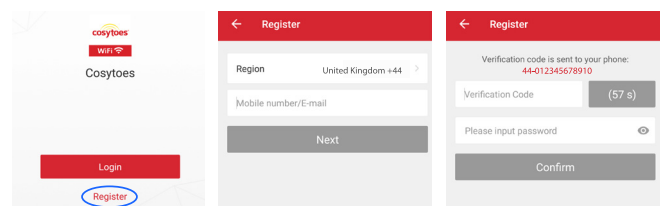
WiFi Setup

Step 1: Scan the QR code or search for "cosytoes" on Google Play or the Apple App Store.

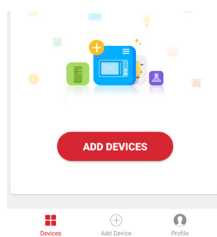


(Only compatible with Android and Apple operating systems)

Step 2: Press 'Register' and enter either your mobile phone number or email address. If using your mobile number for your login, a verification number will be texted to the supplied number. This registration process creates a profile connecting your device to the cloud, allowing it to be accessed wherever you are using your mobile data.

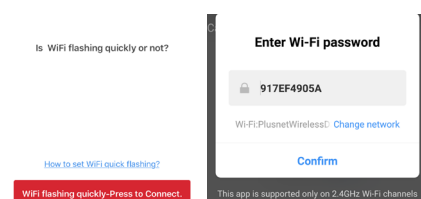


Step 3: Press 'Add Device' to begin the setup process. You will be prompted to ensure the WiFi icon on the timerstat interface is flashing quickly. To set this up, return to the main screen on the stat and then hold both the up and down buttons until "F1" is displayed.

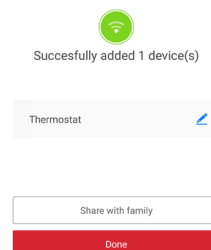


Tip: If the icon doesn't flash, try switching the mains power to the unit off and on again.

Step 4: Step 4: Tap the "WiFi flashing quickly-Press to Continue" Button. You will be prompted to enter your WiFi password. After correctly entering your details, press confirm. The connection will now be initialized. Set up complete!

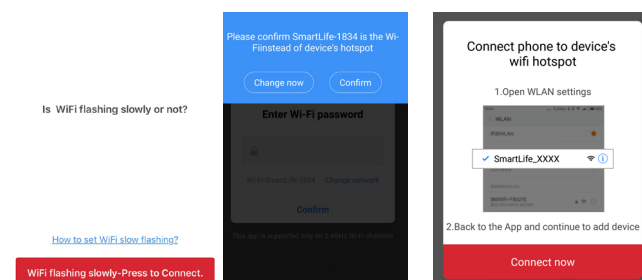


If you would like to share control of this device with another user, press 'Share with family' on the successfully added screen OR press Device sharing in either the profile tab or in the '...' button in the top right of the device control screen and enter their login. If this is not carried out then only 1 user may access the device.



Troubleshooting:

If the connection fails repeatedly in 'F1' mode, try the alternative mode by again holding both the up and down arrows until 'F2' is displayed and then select 'AP mode' in the top right of the 'add device' screen. This mode uses the thermostat as a WiFi hotspot. Press the continue button and follow the onscreen prompt to change your phone's WiFi connection to the thermostat's hotspot.



Functions and User Operation

On/Off

Press POWER to turn on/off

Note: When frost protection mode is active, the timerstat will maintain the frost protection temperature when in 'off' mode.

Temporary Override Temperature

In 'on' mode, press Δ or ∇ to change the current period temperature setting. The new set temperature will flash for 30 seconds. The timerstat will revert to the normal programmed settings at the start of the next time period.

Set the Time

In 'on' mode, press \bigcirc and the clock symbol will flash.

Press \bigcirc again to enter day set.

Press Δ or ∇ to set day.

Press \bigcirc to confirm and enter hour set.

Press Δ or ∇ to set hour.

Press \bigcirc to confirm and enter minute set.

Press Δ or ∇ to set minute.

Press \hookrightarrow to confirm, then press \hookrightarrow again to revert to normal screen. Or leave to timeout.

Key-lock

Setting key-lock can prevent children and others from switching timerstat parameters.

In 'on' mode, press \hookrightarrow for 5 seconds to lock the timerstat and again for 5 seconds to cancel.

Holiday mode

In holiday mode, the Curve will maintain the frost protection

temperature until the holiday period ends.

In 'on' mode, press \bigcirc to enter setting.

Press Δ or ∇ to select holiday.

Press \bigcirc to enter holiday days set.

Press Δ or ∇ to set the number of holiday days.

Press \bigcirc to confirm and return to the normal screen.

Note: In holiday mode 'HOLIDAY LEFT' days remaining will show on the display. Set the holiday days to '0' to cancel holiday mode. Then press POWER twice to return to normal screen.

Hold mode

The Curve will maintain the 'hold temperature' until hold is switched off.

In 'on' mode, press \bigcirc to enter setting.

Press Δ or ∇ to select hold.

Press \bigcirc to enter hold.

Press Δ or ∇ to set hold to ON.

Press \bigcirc to enter hold temperature set.

Press Δ or ∇ to set hold temperature.

Press \bigcirc to confirm and return to the normal screen.

Note: Whilst in hold mode, 'HOLD' will show on the display.

To turn off hold mode, re enter hold as above and set ON to OFF

Timer setting

Each day of the week has 4 time periods, you should allot a temperature to each time period. Set the temperature above room ambient temperature and the heating will come on until the desired temperature is reached, or, set the temperature low and the heating will not come on during that time period. The default settings are shown in the table below.

In 'on' mode, press **O** to enter setting.
 Press **△** or **▽** to select edit.
 Press **O** to enter day selection.
 Press **△** or **▽** to select the day to be set. Note: Weekdays are set as a group, Saturday & Sunday individually.
 Press **O** to enter period selection.
 Press **△** or **▽** to select the period to be set.
 Press **O** to enter start time set.
 Press **△** or **▽** to select the start time hour.
 Press **O** to enter minute set.
 Press **△** or **▽** to select the start time minute.
 Press **O** to enter temperature set.
 Press **△** or **▽** to select the temperature.
 Press **O** to confirm and move on to the next time period.

When all four time periods have been set the next day will then be available to set.

Press **POWER** twice to return to normal screen or allow to time out at any time and your settings will be saved.

Default period settings for time and temperature

Week	Wake	Leave	Return	Sleep
Mon - Fri	6:00 20°C	8:00 15°C	16:00 20.5°C	22:00 15°C
Sat / Sun	8:00 20.5°C	10:00 15°C	16:00 20.5°C	22:00 15°C

Note: (Please Note: do not try to remove time periods or the thermostat may be damaged)

Advanced Settings

Note: These are normally set by the installer.

In 'on' mode, press **O** to enter setting.
 Press **△** or **▽** to select setup.
 Press **O** to enter advanced setting.
 Each parameter can be accessed by pressing **O** and then adjust the values as required.

No	Name	Default	Ranges
1	Room temp calibration	0°C	-5°C to +5°C
2	Floor temp calibration	0°C	-5°C to +5°C
3	Frost Protection	ON	OFF/ON
4	Frost Protection	5°C	-5°C to +15°C
5	Sensor selection	02	00: Built-in sensor 01: Floor sensor 02: Both sensors Note: Set to 01 for underfloor heating in kitchens and bathrooms.
6	Floor temperature limit (both sensors)	30°C	20°C to 50°C
7	Temperature unit	°C	00: °C 01: °F
8	Output delay	00	00: 0s 01: 30s 02: 60s 03: 90s

Open Window Detection

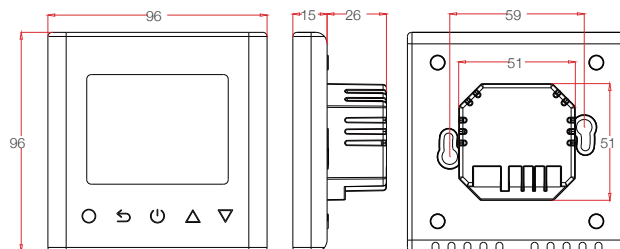
The thermostat can detect an open window by registering a rapid drop in temperature. With the function enabled, the thermostat shuts off the heating for 15 minutes if an open window is detected. It is energy saving and can protect the floor. When the window closed, please press for twice then back to the regular program status. Note: this function cannot be prohibited.

Troubleshooting

Fault Codes

E1 = Built-in sensor short-circuit or disconnected.
 E2 = Floor sensor damaged/disconnected/clamped on to insulation or incorrect floor sensor installed.
 Note: The floor sensor resistance should be in the range of 10K Ohms - please check.
 Please call 0113 2577 588 for replacement floor sensor.

Dimensions



No	Name	Default	Ranges
9	Differential temp setting	1°C	00: 0.5°C 01: 1°C 02: 2°C 03: 3°C
10	Reverse output	OFF	OFF/ON
11	Factory Reset	NO	No (Don't reset) Yes (Reset)

Press **POWER** twice to return to normal screen or allow to time out at any time and your settings will be saved.

Notes

Room sensor temperature calibration: calibrate the temperature detected by room sensor.

Floor sensor temperature calibration: calibrate the temperature detected by floor sensor.

Frost protection: If the frost protection function is selected, the screen will display “*” when the thermostat is OFF. It will keep the room and floor at a low temperature in order to protect pets and plants and prevent water pipes in the room from freezing.

Sensor selection: The room sensor is used to control the room temperature. The floor sensor is used to control the floor temperature. By using both of them, you can not only control the room temperature but also avoid high floor temperature.

Page 12 **Floor temperature limitation:** When you choose both sensors, you can set the maximum floor temperature value, system will stop heating if the floor temperature exceeds this value.

Temperature unit: °F and °C can be selected.

Output delay: The time period between heating on and off due to temperature change.

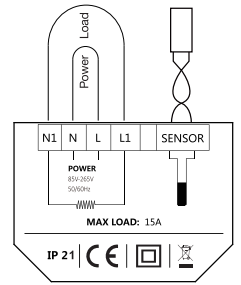
Differential Temperature Setting: The deviation is 1°C. This means If you set a temperature value, the heating temperature will be 1°C lower than the set temperature. The system will stop heating when the temperature is 1°C higher than the set temperature.

Reverse output: This function works with a cooling system. When the temperature is higher than set temperature, the thermostat will switch off the cooling system and vice versa.

Factory Reset: All setting parameters are restored to default values.

Page 13 **Wiring Instructions**

This Timerstat should only be wired by a 'Part P' qualified Electrician as required by IEE regulations. The power supply must be on an RCD protected circuit and connected via a correctly fused switched fused spur isolator.



Guarantee is void if these provisions are not followed.

Before connecting, please test the resistance of the heating cable/s against the values shown in the relevant installation manual to make sure the cable hasn't been damaged. Also test between live/earth and neutral/earth for a zero reading. The wiring terminals will only take a maximum of 2 wires - more than this should be connected via a junction box. Mains earth and heating cable earth should be connected behind the timerstat using a block connector. Please contact 0113 2577 588 for advice if required.

Installation Instructions

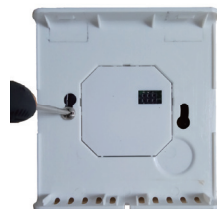
1. Loosen fixing screw on the base of the timerstat and separate front panel from back section.



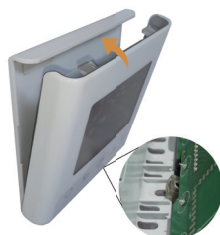
2. Wire the back section as shown in the wiring diagram.



3. Fix the back section to wall box with screws provided.



4. Replace the front panel whilst ensuring the pins engage properly in the circuit board socket.



About Cosytoes® Underfloor Heating

Cosytoes® is a British company and all our products are manufactured to the highest standards for quality and safety.

Key Features

1. Control units will make your floors warm just when you need it.
2. Our systems keep energy costs to a minimum.
3. When heating a modern home, TradeMat+ uses approximately 1p/hour, per square metre.
4. Our products are simple to install, extremely tough, resilient and truly exceptional quality.

Help and Assistance:

Should you need any assistance, please contact us on 0113 2577 588, or email cs@cosytoes.co

Sales Tel: 0113 2577 588 | Fax: 0113 236 2300
Address: Bramley House, Bath Lane, Bramley, Leeds, LS13 3BB.

Note: The Curve timerstat should be mounted using a 86x86x35mm deep wall box.